



Sensonetics, Inc

SEN-600 SERIES WING UNION PRESSURE TRANSMITTER/TRANSDUCER



Manufactured in the USA

- Silicon on Sapphire Diaphragm
- Fast response time <100 microseconds
- Infinite cycle life @ rated FSPR
- Flush face abrasion-proof diaphragm
- No signal decay
- No hysteresis
- EMI/RFI protected
- NEMA 4 and 4X enclosure
- On diaphragm temperature sensor

OPTIONAL

- 4-20 mA output
- 0-5 VDC output
- 0-10 VDC output
- Compliant with MRO-175 (latest revision) for corrosive service
- 3" wing union for 20,000 psi service
- (#2002 WECO® FMC Corporation)
- On diaphragm silicon RTD

APPLICATIONS

- Drilling
- Acidizing
- Wellhead Measurements
- Mud Logging
- Cementing
- Standpipe
- Well Stimulation
- Pressure Pulse Measurement

SEN-600 SERIES WING UNION PRESSURE TRANSMITTER

State-of-the-art Silicon-on-Sapphire pressure transducers have a proven track record in the aerospace, flight test, plastics and down-hole markets. Piezoresistive strain gages are epitaxially grown onto a single-crystal radiation-hardened structure with virtually undetectable hysteresis and non-repeatability. Sapphire is a perfect electrical insulator that does not require diode isolation junctions found on diffused semiconductor pressure transducers. Sapphire is chemically inert allowing compatibility with virtually all media.

Sensonetix' model 600 wing union pressure sensors are made with proven, tough silicon-on-sapphire technology. These transmitters are designed to withstand the roughest of oilfield applications including NACE standard MRO-175. The sapphire diaphragms are resistant to sour gas, corrosive and abrasive materials. Sensonetix' wing union pressure transmitters are proven to hold up under the shock of regular installation and removal as well as the continuous vibrations of a triplex type pump.

Sensonetix offers this robust transmitter in the WECO #1502 or the WECO #2002 for 20,000-psi service. The sensors are also available with 0-5 volt, 0-10 volt and 4-20 ma outputs.

Silicon-on-sapphire sensors provide accuracy down to 0.01% FSO with effectively no hysteresis. Long term drift of less than 1% FSO and proof pressures greater than 2X the rated line pressure are additional features of these versatile transducers.

If accuracy, stability and price are important to you, consider Sensonetix 600 Series Silicon-on-Sapphire Wing Union Pressure Transmitters for your pressure measurement needs.

WECO® FMC Corporation

SEN-600 SERIES WING UNION PRESSURE TRANSMITTER

PRODUCT SPECIFICATIONS

PERFORMANCE

ACCURACY:	$\pm 0.25\%$ of FSO (BFSL)
REPEATABILITY:	better than 0.1% of FSO

TEMPERATURE

OPERATING TEMPERATURE:	-60°TO +250°F
COMPENSATED TEMPERATURE:	-60°TO +250°F

THERMAL EFFECTS

THERMAL ZERO SHIFT:	$\pm 0.01\%$ FSO/°F
THERMAL SPAN SHIFT:	$\pm 0.01\%$ FSO/°F

ELECTRICAL

INPUT VOLTAGE:	8-30 VDC
OUTPUT SIGNAL:	4 ma @Zero Pressure, 20 ma @ Full Scale Output
INSULATION RESISTANCE:	50 MEGAOHMS @ 100 VDC
CIRCUIT PROTECTION:	reverse polarity protection
RFI/EMI IMMUNITY:	0.3-0.9 giga-Hz

MECHANICAL

OPERATING PRESSURE RANGES:	up to 20.000 psi
OVER PRESSURE:	1.5 times rated pressure or WECO fitting's maximum pressure of 20,000 psi
BURST PRESSURE:	2.5 times rated pressure or WECO fitting's maximum pressure of 20.000 psi

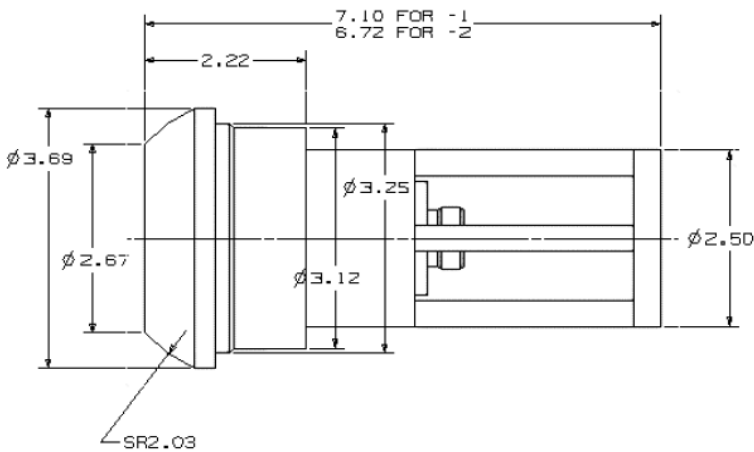
SEN-600 SERIES

ORDERING INFORMATION

SEN-6XX-XXX-XX-XX-X

MODEL:	
6 = WING UNION	
OUTPUT:	
1 = PRESSURE TRANSDUCER, 0-5 VDC	
2 = PRESSURE TRANSMITTER, 4-20 ma	
3 = PRESSURE TRANSDUCER, 0-10 VDC	
OUTPUT:	
1 = PRESSURE ONLY	
2 = PRESSURE AND TEMPERATURE	
PRESSURE RANGE:	
5M = 5,000 PSI 10M = 10,000 PSI	
15M = 15,000 PSI 20M = 20,000 PSI	
PRESSURE FITTINGS:	
F9 = WECO 1502 - 2 INCH	
F8 = WECO 2002 - 3 INCH	
ELECTRICAL CONNECTORS:	
C6 = 6 PIN CONNECTOR	
JU = BRAD HARRISON JUPITER CONNECTOR	
FL = FLYING LEADS	
CD = CONDUIT 1/2" NPT	
LE = LEMO	
CONFIGURATIONS:	
2 = CAGE	
3 = CUP	

OUTLINE DRAWINGS



Configuration -2

Configuration -3

